



Bansilal Ramnath Agarwal Charitable Trust's

Vishwakarma College of Arts, Commerce and Science,

Affiliated to Savitribai Phule Pune University & Recognized by Government of Maharashtra

ID No. PUN/PN/ACS/275/2007

NAAC Accredited with B+ Grade

College Code: 824

Dr. Arun Patil
Principal

Ref. No.:

Date:

CRITERIAN II	
Key Indicator	2.6 Student-Teacher ratio
Metric No.	2.6.2 Attainment of programme outcomes and course outcomes are evaluated by institution.








Dr. Arun R. Patil
PRINCIPAL
Vishwakarma College of Arts
Commerce & Science
Kondhwa (Dk.), Pune - 411 011

PO & CO Attainment Policy

Attainment of Course and Programme outcomes:

The college assesses the learning level of students by formative and summative methods following the guidelines of SPPU. The assessment of course outcome attainment is carried out by direct method. Direct assessment tools for theory courses are: Unit Tests, Presentations, Quiz and Assignments. The assessment of laboratory courses is based on performance, skills, group activities, attendance, involvement, understanding, oral, journal writing and timely submission of assignments and seminars. CO assessment for every course is carried out at individual student as well as class level.

Methodology of Course & Program Outcome Attainment:

-  Defining CO & PO for each subject.
 -  Evaluation of Course Outcomes.
 -  Assessment Pattern (Internal Examination/External Examination/Projects/Orals/Assignments).
 -  Calculation of Student wise Course Outcomes.
 -  Calculation of Program Outcome Attainment.
-

Calculation of CO attainment:

The marks scored by students for every course outcome is calculated and the attainment level is computed using rubrics. Six levels are defined outstanding, Excellent, Very Good, Good, Average and Not Satisfactory attainment for direct assessment methods.

CO ATTAINMENT			
SN	Marks	Level of Attainment	Abbreviations
1	90 to 100	Outstanding	O
2	75 to 89	Excellent	E
3	60 to 74	Very Good	VG
4	50 to 59	Good	G
5	40 to 49	Average	AVG
6	below 40	Not Satisfactory	NS

CO ATTAINMENT			
SN	Marks	Level of Attainment	Abbreviation
1	42 to 50	Outstanding	O
2	34 to 41	Excellent	E
3	26 to 33	Very Good	VG
4	18 to 27	Good	G
5	10 to 17	Average	AVG
6	below 10	Not Satisfactory	NS

CO ATTAINMENT			
SN	Marks	Level of Attainment	Abbreviation
1	21 to 25	Outstanding	O
2	16 to 20	Excellent	E
3	11 to 15	Very Good	VG
4	6 to 10	Good	G
5	1 to 5	Average	AVG
6	below 1	Not Satisfactory	NS

CO ATTAINMENT			
SN	Marks	Level of Attainment	Abbreviation
1	417 to 500	Outstanding	O
2	334 to 416	Excellent	E
3	251 to 333	Very Good	VG
4	168 to 250	Good	G
5	85 to 167	Average	AVG
6	below 85	Not Satisfactory	NS

CO ATTAINMENT			
SN	Marks	Level of Attainment	Abbreviation
1	25 to 30	Outstanding	O
2	20 to 24	Excellent	E
3	15 to 19	Very Good	VG
4	10 to 14	Good	G
5	5 to 9	Average	AVG
6	below 5	Not Satisfactory	NS

CO ATTAINMENT			
SN	Marks	Level of Attainment	Abbreviation
1	34 to 40	Outstanding	O
2	27 to 33	Excellent	E
3	20 to 26	Very Good	VG
4	13 to 19	Good	G
5	6 to 12	Average	AVG
6	below 6	Not Satisfactory	NS

Level of PO attainment:

PO Attainment	<50	>50 & <65	>65 & <80	>80
Targets	10%	40%	40%	10%

The percentage marks scored by the students for a particular program are calculated and PO attainment is computed. The PO attainment level is calculated using the table given above according to three levels i.e. Low, Moderate and High

Level
1 (Low)
2 (Moderate)
3 (High)



Seat No	Name	ST	CO attainment	PRACT	CO attainment	WT 2	CO attainment	DA	CO attainment	PRACT	CO attainment	POP	CO attainment	CC	CO attainment	PRAC T	CO attainment	STT	CO attainment	PROJ	SGPA VI
5283	GADE SAYALI GANESH	16	E	18	O	16	E	16	E	18	O	12	VG	16	E	16	E	16	E	16	8.00
5284	KADAM MAYUR DILIP	14	E	18	O	12	VG	12	VG	16	E	10	G	16	E	16	E	16	E	16	7.00
5285	SHAIKH ASIM GAFFAR	10	G	18	O	10	G	8	G	18	O	8	G	16	E	16	E	14	E	18	6.55
5286	ABHIJIT BHAGWAN PILANE	16	E	20	O	16	E	16	E	20	O	14	E	18	O	18	O	18	O	18	8.73
5287	ADHAV VAIBHAV GAJENDRA	16	E	20	O	16	E	16	E	18	O	14	E	16	E	18	O	18	O	18	9.45
5288	Ahmad Samim Samimi	8	G	0	NS	8	G	0	NS	0	NS	0	NS	0	NS	0	NS	14	E	16	F
5289	ALLAM SAURAV RAJESH	16	E	20	O	12	VG	18	O	20	O	16	E	20	O	20	O	20	O	20	9.00
5290	PRAJAPATI AMAN JAWAHARLAL	14	E	0	NS	10	G	16	E	0	NS	14	E	18	O	0	NS	18	O	0	
5291	AMRITHA SIVA PRASAD	18	O	20	O	18	O	16	E	20	O	18	O	18	O	18	O	20	O	18	9.09
5292	ANGIDIKAR PRATHAM SOMNATH	16	E	18	O	18	O	14	E	20	O	16	E	18	O	18	O	18	O	16	8.56
5293	ARE RUTUJA ARUN	16	E	18	O	16	E	16	E	18	O	16	E	16	E	18	O	16	E	16	8.27
5294	ATAR ALFIYAH KAUSAR SAMEER	20	O	20	O	18	O	18	O	20	O	18	O	20	O	20	O	20	O	18	9.55
5295	BATABYAL SOUMYAJIT SUDIP	16	E	18	O	10	G	16	E	18	O	8	G	16	E	16	E	18	O	16	7.45
5296	BHAGAT SAGAR	16	E	18	O	14	E	12	VG	18	O	12	VG	16	E	18	O	16	E	18	7.55
5297	BHALERAO GANESH DILIP	18	O	18	O	16	E	16	E	18	O	16	E	16	E	18	O	16	E	20	8.36
5298	BHONDWE SAKSHI BHUPENDRA	16	E	18	O	16	E	16	E	18	O	16	E	16	E	16	E	18	O	18	8.36
5299	BHORADE PRIYANKA RAVINDRA	16	E	18	O	16	E	16	E	20	O	16	E	18	O	18	O	18	O	16	8.45
5300	BHOSALE ADITYA SANJAY	16	E	18	O	18	O	16	E	18	O	16	E	20	O	18	O	18	O	16	8.64
5301	BHOSALE KUNAL DATTATRAY	14	E	18	O	14	E	16	E	18	O	14	E	16	E	16	E	16	E	18	7.91
5302	BIRADAR SUNITA BALU	20	O	20	O	18	O	18	O	18	O	18	O	18	O	18	O	20	O	18	9.18
5303	BORA BHAVESH RAVINDRA	18	O	18	O	16	E	16	E	20	O	16	E	18	O	18	O	16	E	16	8.55
5304	CHANDEL SHASHWAT SHIVPRATAP	18	O	18	O	14	E	16	E	18	O	16	E	16	E	18	O	18	O	18	8.46
5305	CHATLA KOMAL PRASHANT	18	O	20	O	14	E	18	O	20	O	16	E	20	O	18	O	18	O	18	8.91
5306	CHAUDHARI DARSHAN RAVINDRA	18	O	20	O	20	O	18	O	20	O	16	E	18	O	20	O	20	O	18	9.36
5307	CHAVAN ANIKET BALASAHEB	18	O	18	O	18	O	18	O	18	O	16	E	20	O	18	O	20	O	16	8.91
5308	CHAVAN BHUSHAN PRAKASH	20	O	20	O	16	E	16	E	18	O	16	E	18	O	18	O	18	O	16	8.73
5309	CHAVAN NEHA TANAJI	18	O	20	O	18	O	18	O	20	O	14	E	16	E	18	O	20	O	18	8.91

5310	CHAVAN PRAJAKTA PRATAP	18	O	20	O	16	E	18	O	18	O	16	E	20	O	18	O	16	E	18	8.82
5311	CHAVAN PRATIKSHA SUNIL	16	E	18	O	16	E	16	E	18	O	16	E	18	O	18	O	18	O	18	8.64
5312	CHAVAN ROHIT RAJENDRA	16	E	18	O	12	VG	16	E	18	O	12	VG	16	E	18	O	18	O	20	8.09
5313	CHOUDHARI ANUSHKA VIJAY	18	O	20	O	16	E	18	O	18	O	16	E	18	O	18	O	18	O	18	8.82
5314	CHOUDHARI PRANIL ANIL	20	O	20	O	16	E	18	O	20	O	18	O	18	O	18	O	20	O	20	9.36
5315	CHOUDHARY NEELAM	16	E	20	O	16	E	16	E	18	O	14	E	16	E	18	O	16	E	16	8.09
5316	DAHIWAL DHIRAJ GANESHRAO	16	E	18	O	8	G	12	VG	18	O	16	E	16	E	16	E	14	E	16	7.36
5317	DAIMIWAL TASMAY GHANSHYAM	16	E	18	O	14	E	16	E	18	O	16	E	18	O	16	E	18	O	16	8.27
5318	DALVI NAMRATA RAJU	18	O	18	O	12	VG	16	E	18	O	14	E	18	O	16	E	18	O	20	8.36
5319	DANI SEJAL VIJAY	18	O	18	O	18	O	18	O	18	O	12	VG	14	E	16	E	18	O	16	8.27
5320	DEGAONKAR GAURI	16	E	18	O	16	E	14	E	18	O	16	E	16	E	16	E	18	O	18	8.27
5321	DEORE RUSHIKESH	14	E	18	O	16	E	16	E	18	O	10	G	16	E	16	E	16	E	18	7.73
5322	DESHMUKH PRATHAMESH KISHOR	18	O	18	O	18	O	16	E	18	O	16	E	16	E	18	O	18	O	16	8.18
5323	DHIMATE PRACHI PRAMOD	16	E	18	O	12	VG	16	E	18	O	16	E	18	O	16	E	16	E	16	8.09
5324	DHONGADI AVENDRA RAHUL	18	O	18	O	16	E	16	E	18	O	16	E	16	E	18	O	20	O	20	8.73
5325	DIKONDA ANIKET BHASKAR	16	E	18	O	14	E	16	E	18	O	18	O	18	O	16	E	18	O	16	8.36
5326	DIXIT DEVYANI SHAILENDRA	16	E	18	O	16	E	16	E	18	O	18	O	18	O	18	O	18	O	16	8.55
5327	DURGADE SAKSHI RAMRAO	18	O	18	O	16	E	16	E	18	O	16	E	18	O	18	O	18	O	16	8.55
5328	ESHA KHAPARE	16	E	16	E	8	G	14	E	18	O	16	E	10	G	16	E	16	E	18	
5329	GADEWAR LAV VIVEK	18	O	18	O	14	E	16	E	18	O	16	E	18	O	16	E	20	O	16	8.45
5330	GAIKWAD CHAITANYA SANTOSH	18	O	18	O	18	O	18	O	18	O	20	O	18	O	18	O	20	O	18	9.27
5331	GAIKWAD VISHAL DASHRATH	16	E	18	O	14	E	16	E	18	O	16	E	16	E	18	O	18	O	16	8.27
5332	GOLAMBADE RITIK MOHAN	16	E	18	O	16	E	16	E	18	O	16	E	16	E	18	O	16	E	16	8.36
5333	GURAV SHRADDHA GANESH	12	VG	18	O	14	E	16	E	18	O	16	E	16	E	16	E	18	O	16	8.00
5334	HARNEKAR ASAD NURUL AMIN	18	O	18	O	18	O	18	O	18	O	18	O	20	O	16	E	20	O	20	9.27
5335	JADHAV MANASI SHREEDHAR	18	O	18	O	18	O	18	O	20	O	18	O	18	O	16	E	20	O	16	9.00
5336	JADHAV OMKAR SATISH	18	O	18	O	16	E	16	E	18	O	16	E	18	O	18	O	20	O	18	8.82
5337	JADHAV SAYEE SANTOSH	20	O	20	O	18	O	18	O	18	O	20	O	20	O	20	O	20	O	18	9.55
5338	JAGDALE PUSHKAR UMESH	18	O	18	O	18	O	16	E	18	O	16	E	16	E	18	O	18	O	16	8.64
5339	JAGDHANE ABHISHEK HARI	12	VG	12	VG	12	VG	16	E	12	VG	12	VG	12	VG	16	E	12	VG	16	8.64
5340	JAGTAP AAKASH SATISH		NS		NS		NS		NS		NS		NS		NS		NS		NS		
5341	JAGTAP ATHARVA RAHUL	18	O	18	O	14	E	16	E	18	O	18	O	16	E	18	O	20	O	20	8.73

5342	JAGTAP YASH ASHOK	16	E	18	O	16	E	16	E	18	O	16	E	16	E	18	O	18	O	16	8.35
5343	JAMADAR RIYANA RASHID	16	E	20	O	16	E	16	E	18	O	16	E	18	O	18	O	18	O	18	8.64
5344	JANHAVI NIMJE	16	E	18	O	12	VG	16	E	18	O	16	E	16	E	16	E	16	E	16	7.91
5345	JOSHI NEERAJ SANJAYKUMAR	18	O	18	O	6	AVG	16	E	18	O	16	E	18	O	18	O	18	O	18	8.64
5346	KADAM SHUBHAM SHANKAR	18	O	18	O	18	O	18	O	18	O	16	E	16	E	18	O	18	O	18	8.73
5347	KALAL GAYATRI HANUMANT	18	O	18	O	16	E	18	O	20	O	16	E	18	O	18	O	20	O	18	8.91
5348	KANJARIYA BEENA HANSRAJ	14	E	18	O	8	G	16	E	18	O	16	E	16	E	18	O	16	E	16	7.45
5349	KANKATTE MANSI	10	G	18	O	12	VG	16	E	18	O	16	E	16	E	16	E	16	E	16	7.55
5350	KANOJIA ASHIESH RAJENDRA	18	O	18	O	16	E	16	E	18	O	16	E	20	O	18	O	18	O	20	8.91
5351	KARNIK ATHARVA ASHISH	16	E	18	O	8	G	10	G	18	O	16	E	18	O	16	E	16	E	20	7.45
5352	KATARIYA SEJAL PRAVIN	20	O	20	O	18	O	18	O	20	O	20	O	20	O	20	O	20	O	18	9.73
5353	KATKE DHANANJAY ANIL	16	E	18	O	16	E	16	E	18	O	16	E	16	E	16	E	18	O	18	8.36
5354	KHANDALE YASH SURESH	16	E	16	E	16	E	18	O	20	O	16	E	18	O	16	E	18	O	16	8.55
5355	KHANDRE SHRIRAM	14	E	16	E	10	G	12	VG	16	E	16	E	16	E	16	E	16	E	0	
5356	KHATAVKAR ADITI RAVINDRA	18	O	18	O	16	E	16	E	18	O	18	O	18	O	18	O	18	O	18	8.82
5357	KONDHARE SAHIL RAHUL	12	VG	18	O	12	VG	16	E	18	O	16	E	16	E	18	O	16	E	20	7.82
5358	KSHIRSAGAR AISHWARYA MOHAN	20	O	18	O	20	O	20	O	20	O	20	O	20	O	18	O	20	O	20	9.73
5359	KUKKAR SOHAM AVINASH	18	O	18	O	18	O	16	E	18	O	16	E	16	E	18	O	18	O	18	8.73
5360	LOKHANDE AHISHEK DADASAHEB	18	O	16	E	12	VG	16	E	20	O	14	E	16	E	18	O	18	O	18	8.36
5361	LOKHANDE ATHARV KRISHNA	16	E	18	O	16	E	16	E	18	O	16	E	16	E	18	O	18	O	18	8.45
5362	LUNAWAT ANJALI SANDEEP	18	O	18	O	16	E	20	O	18	O	18	O	20	O	18	O	20	O	18	9.18
5363	PRANAY MAHADIK		NS		NS		NS		NS		NS		NS		NS		NS		NS		
5364	MAHADIK SANKET UTTAM	18	O	18	O	16	E	16	E	18	O	18	O	6	AVG	18	O	18	O	18	8.64
5365	MAHAJAN PAWAN	12	VG	16	E	8	G	12	VG	16	E	12	VG	12	VG	16	E	16	E	18	
5366	MAHINDRAKAR PRANALI VISHWANATH	20	O	18	O	20	O	18	O	18	O	16	E	18	O	18	O	20	O	18	9.18
5367	MANDAL SOHAM GOURANGA	18	O	18	O	18	O	18	O	18	O	16	E	18	O	18	O	20	O	18	9.00
5368	MANDHARE AKANKSHA RAJENDRA	18	O	18	O	18	O	18	O	18	O	16	E	16	E	18	O	20	O	18	8.09
5369	MANDHARE NIKHIL VITTHAL	18	O	18	O	18	O	16	E	16	E	16	E	18	O	16	E	18	O	16	8.27
5370	MAHDHARE NISHA	12	VG	18	O	16	E	12	VG	18	O	14	E	12	VG	16	E	16	E	18	
5371	MASKAR SHRUTI ARUN	14	E	18	O	16	E	14	E	18	O	12	VG	16	E	16	E	16	E	18	7.55

5372	MAURYA HIMANSHU JAIPRAKASH	16	E	18	O	18	O	16	E	16	E	16	E	16	E	16	E	18	O	16	8.09
5373	MEHTA AYUSH ASHISH	20	O	20	O	16	E	20	O	20	O	18	O	20	O	20	O	20	O	20	9.73
5374	MIRGAL NIRAJ SUNIL	16	E	18	O	16	E	16	E	18	O	16	E	16	E	18	O	18	O	18	8.27
5375	MISHRA CHANCHAL UMESH	16	E	18	O	16	E	16	E	18	O	14	E	16	E	18	O	18	O	16	7.82
5376	MOHAMMAD ZUBAIR	14	E	16	E	16	E	16	E	18	O	16	E	16	E	18	O	18	O	18	8.18
5377	MOHITE DIVYA DILIP	14	E	20	O	18	O	16	E	18	O	16	E	18	O	16	E	18	O	16	8.36
5378	MORE NAYAN NIVRUTTI	18	O	18	O	18	O	18	O	18	O	16	E	18	O	16	E	18	O	18	8.82
5379	MORE SOHAM SHANKAR	18	O	18	O	18	O	18	O	20	O	16	E	18	O	18	O	18	O	18	9.00
5380	NAIK PRASHANT BHAGWAT	18	O	16	E	18	O	18	O	20	O	16	E	18	O	18	O	18	O	18	8.91
5381	NAIKWADI AKIB ISMAIL	14	E	18	O	16	E	12	VG	18	O	16	E	18	O	16	E	18	O	16	8.00
5382	NANESHA KARAN HARISH	16	E	20	O	18	O	16	E	20	O	14	E	18	O	20	O	16	E	18	8.82
5383	NARE KETAKI ANIL	16	E	20	O	18	O	18	O	18	O	16	E	18	O	16	E	18	O	18	8.73
5384	NIRALA PRITESHKUMAR SHIVCHANDRA	16	E	18	O	16	E	16	E	16	E	14	E	18	O	16	E	18	O	16	8.00
5385	NISHAD DURGESH MOHAN	12	VG	18	O	16	E	12	VG	18	O	14	E	18	O	16	E	16	E	18	7.91
5386	NISHAD HIMANSHU LALIT	16	E	18	O	16	E	12	VG	18	O	15	E	16	E	16	E	16	E	16	7.91
5387	NISHAD NEELAM	18	O	18	O	16	E	16	E	18	O	16	E	18	O	16	E	18	O	18	8.55
5388	OTARI ATHARVA	14	E	18	O	16	E	16	E	18	O	16	E	18	O	16	E	18	O	18	8.36
5389	PACHPUTE PRAVEG SANJAY	16	E	18	O	16	E	16	E	18	O	16	E	18	O	16	E	18	O	16	8.36
5390	PALANDE PRATIK PRASHANT	16	E	18	O	16	E	16	E	18	O	16	E	18	O	16	E	18	O	18	8.45
5391	PANSARE JUBER HARUN	20	O	18	O	18	O	18	O	18	O	16	E	18	O	18	O	18	O	16	8.91
5392	PARDESHI PRATIKSHA SHIVANARAYAN	18	O	20	O	18	O	16	E	18	O	16	E	18	O	18	O	18	O	18	8.82
5393	PARDESHI SANYOG	16	E	18	O	16	E	16	E	18	O	16	E	18	O	18	O	18	O	16	8.45
5394	PAREEK PINKY PAVAN	16	E	18	O	16	E	16	E	18	O	8	G	16	E	16	E	16	E	18	7.45
5395	PARTHE VAISHNAVI SANDEEP	16	E	18	O	16	E	16	E	18	O	16	E	18	O	16	E	16	E	18	8.36
5396	PATIL DINESH RAJENDRA	16	E	18	O	18	O	16	E	18	O	16	E	18	O	16	E	18	O	16	8.45
5397	PATIL MANISH MOHAN	16	E	18	O	16	E	16	E	18	O	14	E	18	O	16	E	18	O	18	8.36
5398	PATIL RAHUL	12	VG	16	E	16	E	12	VG	16	E	16	E	16	E	16	E	18	O	0	
5399	PATIL RASIKA JANARDAN	18	O	18	O	18	O	18	O	18	O	16	E	18	O	18	O	18	O	18	8.82
5400	PATIL SAKSHI MANOJ	18	O	20	O	20	O	16	E	16	E	16	E	20	O	18	O	20	O	16	8.91
5401	PATIL SEJAL	16	E	18	O	16	E	14	E	18	O	16	E	16	E	16	E	16	E	16	
5402	PATIL SHAMBHURAJ SUHAS	16	E	18	O	16	E	16	E	18	O	16	E	18	O	16	E	18	O	18	8.45

5403	PAWAR DUSHYANT YOGESH	18	O	18	O	18	O	16	E	18	O	16	E	18	O	18	O	18	O	16	8.73
5404	PAWAR NIKITA TANAJI	16	E	18	O	18	O	16	E	18	O	16	E	18	O	16	E	18	O	16	8.45
5405	PAWAR PRANAV PRAVIN	18	O	18	O	16	E	16	E	18	O	16	E	18	O	16	E	18	O	18	8.55
5406	PAWAR SHWETA NARESH	18	O	18	O	18	O	18	O	18	O	16	E	18	O	16	E	20	O	16	8.82
5407	PAWAR SUMIT KISAN	12	VG	18	O	16	E	12	VG	18	O	16	E	16	E	16	E	16	E	16	7.64
5408	PHALKE SANDESH JEEVAN	16	E	18	O	18	O	16	E	16	E	16	E	16	E	16	E	16	E	18	8.27
5409	PIMPLE HRUSHIKESH	16	E	18	O	12	VG	12	VG	18	O	12	VG	14	E	16	E	14	E	18	7.45
5410	PITRE ISHAN SAMIR	18	O	18	O	16	E	16	E	18	O	14	E	16	E	16	E	18	O	18	8.36
5411	POKHARKAR KUNAL BALU	18	O	18	O	18	O	18	O	18	O	18	O	18	O	18	O	18	O	18	8.91
5412	RAIMPURAWALA HUSSAIN CH7BIP	16	E	18	O	16	E	16	E	18	O	16	E	16	E	16	E	18	O	18	8.36
5413	RODE GAURAV SHIVAJI	16	E	18	O	16	E	14	E	18	O	16	E	16	E	16	E	16	E	16	7.91
5414	SAHU AYUSHI DASHRATH	18	O	18	O	12	VG	16	E	16	E	16	E	16	E	16	E	18	O	18	8.18
5415	SALUNKHE NISHA MANOJ	20	O	20	O	18	O	20	O	20	O	18	O	20	O	18	O	20	O	18	9.55
5416	SAROJ POOJA NOKHELAL	18	O	18	O	12	VG	18	O	18	O	16	E	18	O	16	E	18	O	16	8.36
5417	SHIVAM SAROJ	16	E	20	O	16	E	16	E	20	O	18	O	18	O	20	O	16	E	18	8.73
5418	SAWANT NEHA SUNIL	16	E	18	O	10	G	16	E	18	O	16	E	18	O	16	E	18	O	18	8.18
5419	SHAH MAITRI ALPESH	16	E	18	O	18	O	16	E	18	O	14	E	16	E	16	E	18	O	18	8.27
5420	SHAHANE SUDHANSHU SURESH	16	E	0	NS	12	VG	10	G	18	O	12	VG	16	E	0	NS	16	E	0	
5421	SHAIKH AZIM MUSTAFA	18	O	18	O	12	VG	16	E	20	O	16	E	16	E	18	O	18	O	18	8.45
5422	SHAIKH NUMAAN KHALID	18	O	18	O	14	E	16	E	18	O	16	E	18	O	18	O	18	O	18	8.55
5423	SHAIKH SHADAB AHMED	18	O	20	O	16	E	18	O	20	O	18	O	18	O	20	O	18	O	18	9.09
5424	SHAIKH UJEF NISAR	14	E	0	NS	12	VG	8	G	0	NS	12	VG	16	E	0	NS	14	E	0	
5425	SHARMA LAKHAN KRISHNA	18	O	18	O	12	VG	16	E	18	O	16	E	16	E	16	E	18	O	16	8.00
5426	SHARMA RADHA PHOOL	18	O	18	O	16	E	16	E	18	O	16	E	16	E	18	O	18	O	18	8.55
5427	SHARMA SANDIP JAYPRAKASH	16	E	18	O	16	E	16	E	18	O	16	E	18	O	16	E	16	E	18	8.36
5428	SHARMA YASH SURAJ	18	O	18	O	16	E	16	E	18	O	14	E	16	E	16	E	18	O	18	8.27
5429	SHENDKAR NIKITA SURESH	18	O	18	O	14	E	16	E	18	O	16	E	16	E	16	E	18	O	18	8.27
5430	SHINDE ROHAN DEVDAS	16	E	20	O	16	E	16	E	20	O	16	E	14	E	19	O	18	O	20	8.55
5431	SHINDE SANKET SANJAY	16	E	20	O	16	E	14	E	18	O	14	E	16	E	20	O	18	O	18	8.27
5432	SHIRKE PRATHAMESH PRAVIN	16	E	18	O	16	E	12	VG	18	O	12	VG	12	VG	16	E	16	E	16	7.45
5433	SHITOLE YUVRAJ SANJAY	18	O	18	O	18	O	16	E	20	O	16	E	16	E	18	O	18	O	18	8.73
5434	SHUKLA SAGAR UMASHANKAR	18	O	18	O	14	E	16	E	20	O	16	E	16	E	18	O	18	O	18	8.55
5435	SINGH KHUSHVEER BHANWAR	16	E	16	E	16	E	12	VG	18	O	16	E	18	O	16	E	18	O	18	8.00

5436	SURYAWANSHI VAISHNAVI VITTHAL	16	E	18	O	16	E	16	E	18	O	16	E	18	O	18	O	18	O	20	8.64
5437	TAKAWALE MAYUR MOHAN	18	O	18	O	14	E	14	E	18	O	14	E	18	O	16	E	18	O	20	8.36
5438	TAMBOLI SAMEER NOOR M	18	O	18	O	16	E	18	O	20	O	16	E	18	O	18	O	20	O	20	9.00
5439	TILLARE MAYUR	18	O	16	E	12	VG	16	E	18	O	12	VG	16	E	16	E	16	E	20	7.82
5440	TORAT SUCHETAN	16	E	16	E	10	G	12	VG	18	O	14	E	16	E	16	E	16	E	0	
5441	TOGURAGE AMBIKA BANDAPPA	16	E	18	O	12	VG	12	VG	16	E	12	VG	16	E	16	E	16	E	18	7.23
5442	UBALE SHIVAM MAHESH	16	E	18	O	10	G	12	VG	16	E	18	O	12	VG	14	E	16	E	16	7.55
5443	VATHAR AKASH KHAJAPPA	14	E	16	E	12	VG	10	G	16	E	10	G	12	VG	16	E	8	G	16	6.27
5444	WAWALE KIRAN	12	VG	18	O	8	G	0	NS	16	E	8	G	14	E	16	E	10	G	20	
5445	Yadav Gaurav		NS		NS		NS		NS		NS		NS		NS		NS		NS		
5446	YADAV NAGESHWARKUMAR VIJENDRA	14	E	16	E	12	VG	8	G	18	O	12	VG	16	E	16	E	16	E	18	7.18
5447	YADAV SANKET VIJAY	14	E	18	O	8	G	12	VG	18	O	14	E	18	O	16	E	16	E	18	7.36
5448	YENDHE Prasad	16	E	16	E	10	G	8	G	18	O	10	G	14	E	16	E	16	E	18	7.00
5449	ZAD SHRUTI YOGESH	16	E	20	O	12	VG	16	E	20	O	16	E	18	O	18	O	18	O	20	8.64
5450	ZAMBAD SAMIKSHA SANJAY	18	O	20	O	16	E	18	O	18	O	18	O	20	O	18	O	18	O	20	9.18
5451	ZOYA	18	O	20	O	14	E	18	O	20	O	16	E	20	O	18	O	18	O	20	9.00

Sr.No.	Seat no.	Roll No	Student's Name	BRF II (30)	CO attainment	AA II (30)	CO attainment
1	47594	1896	Adnana Peerzada	12	G	15	VG
2	47595	1823	Dangi Shreyas Sanjay	21	E	0	NS
3	47596	1975	Gadge Sahil Uttam	21	E	21	E
4	47597		Gunjal Nikhil Sanjay	12	G	18	VG
5	47599	1854	Katke Sejal Sandeep	24	E	18	VG
6	47600	1993	Kudle Rohit Sunil	21	E	21	E
7	47601	1967	Kuldeep Vikas Kalbhor	24	E	21	E
8	47602	1953	Magnani Raaj Ashok	24	E	27	O
9	47604	1897	Pillai Arjun Ramesh	24	E	24	E
10	47605	1910	Shreyans Sanghvi	0	NS	0	NS
11	47606	1959	Babji Abbas Abdeali	15	VG	24	E
12	47607	1840	Jangda Dhristi Raviraj	21	E	24	E
13	47608	1986	Kothari Prapti Nilesh	24	E	24	E
14	47609	1860	Malik Pratham Sandeep	18	VG	24	E
15	47610	1934	Mihir Thakkar	21	E	21	E
16	47611	1919	Shahane Rasika Narayan	24	E	24	E
17	47612	1964	Shaikh Amaan Rahim	18	VG	21	E
18	47613		Shinde Dipali Prakash	12	G	12	G
19	47614	1974	Thacharakkal Farahnaaz Johar	24	E	24	E
20	47615	1801	Aayush Abhay More	24	E	24	E
21	47616	1803	Agarwal Kaamyesh Manoj	24	E	27	O
22	47617	1925	Ajay Chakra Sonar	15	VG	12	G
23	47618	1805	Akula Indira Ramulu	24	E	21	E
24	47619	1971	Aliasgar Khalil	0	NS	0	NS
25	47620		Ambekar Mitali Vinayak	12	G	0	NS
26	47621	1807	Ammar Ahmedabad	21	E	15	VG
27	47622	1809	Raj Anand Bafna	18	VG	24	E
28	47623	1810	Bangale Shrikant Anand	21	E	24	E
29	47624	1811	Baravkar Omkar Baban	24	E	24	E

30	47625	1816	Borate Ritesh Shrikant	18	VG	21	E
31	47626	1818	Chavan Rohit Shivaji	21	E	21	E
32	47627	1819	Chavan Sahil Vikas	24	E	27	O
33	47628	1822	Choudhary Ashok Jagaram	24	E	27	O
34	47630	1951	Dimble Pranav Nivrutti	24	E	21	E
35	47630		Devda Manisha Chailsing	12	G	18	VG
36	47631		Dungarwal Krishna Ajit	12	G	0	NS
37	47632	1824	Dussal Rushikesh Sachin	24	E	24	E
38	47633	1827	Gandhi Trishla Madanlal	27	O	24	E
39	47634	1946	Ghadage Pooja Sukhdev	21	E	15	VG
40	47635	1950	Gosavi Rohit Rajugir	27	O	27	O
41	47636	1956	Gosavi Tejas Santosh	21	E	24	E
42	47637	1836	Jagtap Kartiki Sambhaji	24	E	24	E
43	47638	1839	Jamadar Aditya Narayan	24	E	27	O
44	47639	1844	Jannu Joystna Chandrashekhae	24	E	24	E
45	47640	1846	Jhawar Shreya Anil	24	E	24	E
46	47642	1848	Kale Jay Subodh	21	E	24	E
47	47643	1850	Kamble Pranjal Sunil	24	E	27	O
48	47644	1852	Kamthe Sakshi Shashikant	27	O	27	O
49	47645	1961	Kamthe Shruti Dilip	27	O	30	O
50	47646	1960	Kamthe Soniya Mahendra	27	O	30	O
51	47647	1855	Khan Yusuf Ajmal	18	VG	24	E
52	47648	1837	Khater Anish Sushil	24	E	24	E
53	47649	1948	Khude Swati Sanjay	21	E	12	G
54	47650	1968	Koditkar Suraj Laxman	21	E	21	E
55	47651	1857	Kshirsagar Shree Santosh	21	E	27	O
56	47652	1858	Lamba Khushi Jitendra	21	E	27	O
57	47653	1859	Lohokare Yash Rajan	24	E	27	O
58	47654	1963	Madhur Bihani	27	O	27	O
59	47655	1861	Mane Dipali Mahesh	24	E	24	E
60	47656	1980	Maral Pratik Sanjay	18	VG	24	E

61	47657	1862	Maruf Safi Nadeem	21	E	21	E
62	47658	1863	Meghawat Rahul Ramesh	0	NS	12	G
63	47659	1869	Mittal Sonali Jagmohan	24	E	24	E
64	47660	1871	More Anurag Ajay	24	E	24	E
65	47661	1874	More Tejas Ganesh	24	E	24	E
66	47662	1983	Mukesh Madanlal Oza	21	E	21	E
67	47663	1988	Nikam Rohit Vilas	15	VG	24	E
68	47664	1882	Oswal Jinesh Sanjay	24	E	21	E
69	47665	1883	Ovhal Ritik Yuvraj	24	E	21	E
70	47666	1849	Pallavi Milind Kamble	24	E	24	E
71	47667	1957	Pandey Ankur Dharmendra	18	VG	12	G
72	47668	1952	Pangare Saurabh Rajendra	24	E	21	E
73	47669	1891	Patel Om Manish	21	E	21	E
74	47670	1892	Pathan Arif Ajij	18	VG	21	E
75	47671	1894	Pawar Aniket Vinod	18	VG	18	VG
76	47672	1895	Pawar Manisha Ganesh	21	E	24	E
77	47674	1902	Rajpurohit Rajesh Dalpatsingh	15	VG	18	VG
78	47675	1817	Rohit Chetan Chavan	18	VG	18	VG
79	47676	1929	Rohit Rukesh Talekar	15	VG	18	VG
80	47677		Salunkhe Hrishikesh Rajesh	15	VG	15	VG
81	47678	1909	Sange Ayyan Daneyal	24	E	27	O
82	47679	1949	Sathe Omkar Suhas	24	E	27	O
83	47680	1911	Shah Aryan Amit	24	E	27	O
84	47681	1916	Shah Manas Ashwin	21	E	24	E
85	47682	1991	Sharma Pratik Satyanarayan	18	VG	15	VG
86	47683	1955	Shriwas Rinku Tulsidas	21	E	21	E
87	47684	1954	Shriwas Vikas Harishchandra	24	E	21	E
88	47685	1992	Kudale Shubham Dattatraya	18	VG	21	E
89	47686	1864	Siddhant Mukesh Mehta	24	E	21	E
90	47687	1928	Suthar Nitin Lunaram	21	E	21	E
91	47688	1893	Taskin Salimkhan Pathan	24	E	24	E

92	47689		Tate AArya Kunal	21	E	24	E
93	47690	1981	Tejas Dattu Sontakke	18	VG	18	VG
94	47691	1938	Tripathi Nikita Surendra	21	E	24	E
95	47692	1940	Varma Gitanjali Subhedar	18	VG	18	VG
96	47693	1941	Vasnani Gayatri Manoj	21	E	27	O
97	47694	1865	Virti Mehta	24	E	27	O
98	47695	1944	Waghmode Karan Shivdas	24	E	27	O
99	47696	1945	Yadav Shraddha Vilas	21	E	18	VG
100	47697	1904	Yashank Ranka	21	E	21	E
101	47698	1972	Aaseri Mukesh Tejaram	24	E	24	E
102	47699	1908	Abhishek Deepak Salunkhe	21	E	24	E
103	47700	1802	Abraham Sanith Kuruvilla	21	E	27	O
104	47701	1804	Agarwal Priya Prakash	24	E	27	O
105	47702	1806	Alefiya Abdulla Husain	27	O	27	O
106	47703	1808	Badgujar Prathamesh Umesh	18	VG	18	VG
107	47704	1982	Bhalke Nikita Shivaji	24	E	27	O
108	47705	1812	Bhandari Nishant Sandeep	24	E	27	O
109	47706	1813	Bhikule Shital Dattatray	21	E	21	E
110	47707	1814	Bhondve Sarthak Vinay	27	O	30	O
111	47708	1815	Bhosale Prachi Prakash	21	E	21	E
112	47709	1820	Chawla Krishna Bhagwan	24	E	27	O
113	47710	1821	Choudhari Bharat Babulal	21	E	24	E
114	47711	1825	Gadia Himanshu Chunilal	21	E	27	O
115	47712	1828	Gohad Aishwary Prashant	21	E	24	E
116	47713	1829	Gote Priyanka Shankar	24	E	24	E
117	47714	1830	Gund Varad Vinod	12	G	15	VG
118	47715	1831	Gundesha Anish Pravin	21	E	27	O
119	47716	1832	Gupta Tushar Narendra	24	E	24	E
120	47717	1833	Hulage Ganesh Babasaheb	21	E	24	E
121	47718	1834	Jadhav Gayatri Gokul	24	E	27	O
122	47719	1835	Jadhav Rituja Ravindra	27	O	30	O

123	47720	1838	Jain Bhupendra Mahendra	0	NS	0	NS
124	47721	1978	Jain Mansi Rajesh	24	E	27	O
125	47722	1841	Jangda Mehak Naresh	24	E	27	O
126	47723	1842	Jangid Balkrishna Hanuman	24	E	27	O
127	47724	1843	Jangid Subhash Ramkishor	21	E	27	O
128	47725	1845	Jayesh Kabra	27	O	30	O
129	47726	1847	Kalal Sweekar Raju	27	O	27	O
130	47727	1851	Kamthe Prithviraj Ravindra	21	E	24	E
131	47728	1853	Kanetiya Yash Gunvantbhai	21	E	21	E
132	47729	1856	Khude Vaishnavi Prafull	21	E	24	E
133	47730	1866	Mengji Vaishnavi Vinod	21	E	21	E
134	47731	1867	Mirajkar Sayam Sajid	24	E	24	E
135	47732	1868	Mishra Ambikaprasad Jayprakash	24	E	18	VG
136	47733	1870	Mohammad Motorwala	24	E	27	O
137	47734	1872	More Priyanka Sudam	24	E	24	E
138	47735	1873	More Sakshi Sanjay	27	O	27	O
139	47736	1875	Nadar Rohit Venkatesh	24	E	24	E
140	47737	1876	Nadkar Mrunal Rahul	24	E	27	O
141	47738	1877	Nagpure Shweta Shrikant	21	E	24	E
142	47739	1878	Naik Roshan Ramakant	18	VG	21	E
143	47740	1879	Nehulkar Tanaya Sandeep	27	O	30	O
144	47741	1880	Nittala Venkata Saiphanindra	27	O	30	O
145	47742	1881	Oswal Akshata Deepak	24	E	24	E
146	47743	1884	Paithankar Aboli Arvind	24	E	27	O
147	47744	1885	Paliwal Narmada Maniklal	24	E	27	O
148	47745	1826	Gaikwad Pallavi Yashwant	24	E	24	E
149	47746	1886	Pansare Fizza Fakirmohammad	27	O	30	O
150	47747	1887	Pareek Charu Ashok	27	O	30	O
151	47748	1888	Pasalkar Tanaya Arun	24	E	27	O
152	47749	1889	Patel Kishan Jitendra	24	E	27	O
153	47750	1890	Patel Krina Amrutlal	27	O	27	O

154	47751	1898	Potdar Bhagyashree Vinayak	21	E	15	VG
155	47752	1899	Pratik Innani	24	E	27	O
156	47753	1976	Pujari Shrikant Mallappa	21	E	18	VG
157	47754	1900	Punjabi Sakshi Bharat	27	O	27	O
158	47755	1903	Rananawre Pragati Ganesh	12	G	18	VG
159	47756	1970	Rathod Abhishek Rajesh	15	VG	15	VG
160	47757	1905	Rathod Bhakti Vinod	27	O	30	O
161	47758	1906	Ratlamwala Mustafa Shabbir	21	E	18	VG
162	47759	1973	Raut Payal Datta	24	E	24	E
163	47760	1907	Ritik Nagda	27	O	30	O
164	47761	1912	Shah Atharv Kiran	24	E	24	E
165	47762	1913	Shah Chirag Nitin	24	E	24	E
166	47763	1914	Shah Khushi Kantilal	24	E	24	E
167	47764	1915	Shah Krishna Nitesh	24	E	27	O
168	47765	1917	Shah Mehek Sharad	24	E	27	O
169	47766	1918	Shah Sejal Nitant	24	E	24	E
170	47767	1965	Shaikh Faisal Aslam	24	E	21	E
171	47768		Shaikh Faizan Shahid	15	VG	15	VG
172	47769	1920	Shaikh Sohel Bakshu	15	VG	24	E
173	47770	1921	Sharma Yash Kavita	27	O	30	O
174	47771	1922	Shelar Aashish Sunil	27	O	30	O
175	47772	1923	Shinde Avantika Bharat	27	O	27	O
176	47773	1958	Shivam Baliram Pardeshi	21	E	18	VG
177	47774	1924	Singh Saurabh Fulena	12	G	15	VG
178	47775	1926	Sudarshan Darak	24	E	24	E
179	47776	1927	Sukhwani Pankaj Roopkumar	24	E	24	E
180	47777		Sule Sakshi Ramesh	12	G	15	VG
181	47778	1930	Tanwar Riddhi Nareshsingh	24	E	27	O
182	47779	1931	Thakkar Aditya Sanjay	24	E	24	E
183	47780	1933	Thakkar Kejal Manoj	24	E	24	E
184	47781	1935	Thakkar Nehal Mahesh	21	E	24	E

185	47782	1936	Thakkar Parth Vijay	27	O	24	E
186	47783	1937	Tikhe Prathamesh Manish	24	E	24	E
187	47784	1939	Umang Innani	24	E	27	O
188	47785	1979	Unecha Kiran Lalu	18	VG	18	VG
189	47786	1942	Vedanth Innani				

IGE/IE II (30)	CO attainment	A & T II (40)	CO attainment	BA II (40)	CO attainment	BAII (40)	CO attainment	CWA II (40)
15	VG	28	E			32	E	
0	NS	16	G	0	NS	20	VG	
21	E	32	E	32	E	32	E	
12	G	28	E	32	E	32	E	
21	E	32	E	36	O	36	O	
21	E	32	E	32	E	32	E	
21	E	32	E	36	O	32	E	
24	E	36	O	36	O	36	O	
21	E	32	E	32	E	36	O	
12	G	24	VG	28	E	28	E	
18	VG	32	E	24	VG	32	E	
21	E	32	E					36
18	VG	32	E					36
15	VG	32	E					32
21	E	32	E					36
24	E	32	E					40
18	VG	24	VG					36
12	G	28	E					36
21	E	32	E					36
24	E	32	E	36	O	32	E	
24	E	32	E	36	O	36	O	
18	VG	32	E	32	E	32	E	
24	E	32	E	36	O	36	O	
0	NS	0	NS	0	NS	0	NS	
21	E	0	NS	32	E	32	E	
24	E	32	E	36	O	36	O	
21	E	28	E	32	E	32	E	
24	E	32	E	36	O	36	O	
24	E	36	O	36	O	32	E	

21	E	32	E	32	E	32	E	
24	E	32	E	32	E	32	E	
24	E	32	E	36	O	36	O	
24	E	32	E	36	O	36	O	
24	E	32	E	36	O	36	O	
12	G	32	E	32	E	32	E	
24	E	32	E	32	E	32	E	
24	E	32	E	36	O	36	O	
24	E	36	O	36	O	36	O	
24	E	32	E	32	E	32	E	
30	O	32	E	36	O	36	O	
24	E	28	E	32	E	32	E	
27	O	32	E	36	O	32	E	
24	E	32	E	32	E	32	E	
24	E	28	E	32	E	32	E	
24	E	32	E	36	O	32	E	
24	E	36	O	36	O	32	E	
27	O	32	E	36	O	36	O	
27	O	36	O	36	O	36	O	
27	O	36	O	36	O	36	O	
27	O	36	O	36	O	36	O	
24	E	32	E	32	E	32	E	
27	O	36	O	36	O	36	O	
27	O	32	E	32	E	32	E	
24	E	32	E	32	E	32	E	
27	O	36	O	36	O	32	E	
27	O	36	O	36	O	36	O	
27	O	32	E	36	O	32	E	
27	O	36	O	32	E	32	E	
24	E	32	E	36	O	36	O	
24	E	28	E	32	E	32	E	

24	E	32	E	32	E	32	E	
0	NS	24	VG	32	E	28	E	
27	O	32	E	36	O	32	E	
27	O	32	E	36	O	32	E	
24	E	32	E	36	O	32	E	
24	E	32	E	32	E	32	E	
24	E	32	E	32	E	32	E	
21	E	32	E	32	E	32	E	
24	E	32	E	32	E	32	E	
27	O	32	E	36	O	36	O	
18	VG	32	E	32	E	32	E	
21	E	32	E	36	O	32	E	
21	E	32	E	32	E	32	E	
24	E	32	E	32	E	32	E	
24	E	32	E	32	E	32	E	
24	E	32	E	32	E	32	E	
21	E	32	E	32	E	32	E	
21	E	32	E	32	E	32	E	
21	E	32	E	32	E	32	E	
21	E	32	E	32	E	32	E	
24	E	36	O	32	E	32	E	
24	E	32	E	32	E	32	E	
27	O	36	O	36	O	36	O	
27	O	36	O	32	E	32	E	
21	E	32	E	32	E	32	E	
24	E	32	E	32	E	32	E	
24	E	32	E	32	E	32	E	
21	E	36	O	32	E	32	E	
24	E	32	E	32	E	32	E	
18	VG	36	O	36	O	32	E	
21	E	32	E	36	O	32	E	

18	VG	32	E	32	E	32	E	
15	VG	32	E	32	E	32	E	
24	E	32	E	32	E	32	E	
21	E	32	E	32	E	32	E	
24	E	36	O	36	O	32	E	
27	O	36	O	36	O	32	E	
27	O	36	O	36	O	36	O	
24	E	36	O	32	E	32	E	
21	E	36	O	32	E	32	E	
24	E	32	E					36
21	E	32	E					36
24	E	32	E					36
24	E	32	E					36
24	E	36	O					36
24	E	32	E					32
24	E	32	E					36
27	O	36	O					36
21	E	32	E					32
27	O	40	O					40
21	E	32	E					36
24	E	36	O					36
24	E	36	O					36
24	E	36	O	36	O	36	O	
24	E	36	O					36
27	O	36	O					32
12	G	28	E					36
21	E	32	E					36
21	E	32	E					36
15	VG	32	E					36
24	E	36	O					36
24	E	36	O					40

0	NS	0	NS					0
24	E	32	E					36
24	E	36	O					40
24	E	32	E					32
24	E	36	O					32
27	O	36	O					40
27	O	32	E					40
15	VG	32	E					36
21	E	32	E					36
24	E	32	E	40	O	36	O	
24	E	32	E					40
21	E	28	E					32
21	E	32	E					36
24	E	36	O					36
24	E	36	O					36
27	O	36	O					36
21	E	32	E					36
21	E	32	E					36
21	E	32	E					40
21	E	32	E					36
27	O	36	O					36
24	E	36	O					40
24	E	32	E					32
24	E	36	O					36
24	E	32	E					36
24	E	32	E					36
24	E	36	O	36	O	40	O	
27	O	36	O					40
21	E	36	O					40
24	E	36	O					40
24	E	36	O					40

12	G	32	E					36
24	E	36	O					36
21	E	28	E					32
27	O	36	O					40
21	E	24	VG					36
21	E	28	E					36
24	E	36	O					36
21	E	36	O					36
24	E	32	E					40
27	O	36	O					40
24	E	36	O					36
21	E	32	E					36
24	E	36	O					36
24	E	36	O					36
24	E	36	O					36
24	E	36	O					36
18	VG	32	E					32
18	VG	28	E					32
15	VG	24	VG					36
27	O	36	O					40
27	O	36	O					40
27	O	36	O					40
24	E	32	E					36
18	VG	28	E					32
24	E	32	E					40
24	E	32	E					36
21	E	24	VG					36
24	E	32	E					40
24	E	32	E					36
24	E	36	O					36
24	E	32	E					36

24	E	36	O					36
24	E	36	O					36
24	E	36	O					36
21	E	20	VG					36

CO attainment	CWA III (40)	CO attainment	Total Credits (210)	SGPA	RAND TOTAL	
					740	
			134	6.38	149	
			57	FAIL ATKT	57	
			159	7.57	180	
			134	6.38	152	
			167	7.95	185	
			159	7.57	180	
			166	7.9	187	
			183	8.71	210	
			169	8.05	193	
			92	FAIL ATKT	92	
			145	6.9	169	
O	36	O	170	8.1	194	
O	36	O	170	8.1	194	
E	32	E	153	FAIL ATKT	177	
O	36	O	167	7.95	188	
O	36	O	180	8.57	204	
O	32	E	149	7.1	170	
O	32	E	132	6.29	144	
O	32	E	169	8.05	193	
			172	8.19	196	
			179	8.52	206	
			141	6.71	153	
			173	8.24	194	
			0	FAIL ATKT	0	
			97	FAIL ATKT	97	
			164	7.81	179	
			155	7.38	179	
			173	8.24	197	
			176	8.38	200	

			156	7.43	177	
			162	7.71	183	
			179	8.52	206	
			179	8.52	206	
			173	8.24	194	
			138	6.57	156	
			132	FAIL ATKT	132	
			176	8.38	200	
			183	8.71	207	
			156	7.43	171	
			188	8.95	215	
			161	7.67	185	
			175	8.33	199	
			171	8.14	198	
			164	7.81	188	
			172	8.19	196	
			173	8.24	197	
			182	8.67	209	
			189	9	216	
			192	9.14	222	
			192	9.14	222	
			162	7.71	186	
			183	8.71	207	
			156	7.43	168	
			162	7.71	183	
			179	8.52	206	
			183	8.71	210	
			178	8.48	205	
			181	8.62	208	
			176	8.38	200	
			158	7.52	182	

			162	7.71	183	
			96	FAIL ATKT	108	
			175	8.33	199	
			175	8.33	199	
			172	8.19	196	
			162	7.71	183	
			159	7.57	183	
			162	7.71	183	
			165	7.86	186	
			179	8.52	203	
			144	6.86	156	
			166	7.9	187	
			159	7.57	180	
			159	7.57	180	
			156	7.43	174	
			165	7.86	189	
			150	7.14	168	
			153	7.29	171	
			150	7.14	168	
			147	7	162	
			175	8.33	202	
			171	8.14	198	
			186	8.86	213	
			172	8.19	196	
			150	7.14	165	
			162	7.71	183	
			165	7.86	186	
			160	7.62	181	
			165	7.86	186	
			164	7.81	185	
			169	8.05	193	

			159	7.57	183	
			147	7	165	
			165	7.86	189	
			153	7.29	171	
			176	8.38	203	
			182	8.67	209	
			186	8.86	213	
			163	7.76	181	
			163	7.76	184	
	36		176		200	
	32		166	7.9	190	
	36		176	8.38	203	
	36		179	8.52	206	
	40		190	9.05	217	
	32		156	7.43	174	
	36		179	8.52	206	
	36		186	8.86	213	
	32		159	7.57	180	
	40		204	9.71	234	
	36		167	7.95	188	
	36		183	8.71	210	
	36		177	8.43	201	
			180	8.57	207	
	36		177	8.43	201	
	36		179	8.52	203	
	36		139	6.62	154	
	36		173	8.24	200	
	32		169	8.05	193	
	36		164	7.81	188	
	36		183	8.71	210	
	40		197	9.38	227	

	0		0	FAIL ATKT	0	
	36		179	8.52	206	
	36		187	8.9	214	
	32		171	8.14	198	
	32		172	8.19	199	
	40		200	9.52	230	
	36		189	9	216	
	32		160	7.62	184	
	32		163	7.76	184	
			177	8.43	201	
	36		174	8.29	195	
	32		161	7.67	185	
	36		167	7.95	185	
	36		183	8.71	210	
	36		180	8.57	204	
	40		193	9.19	220	
	36		173	8.24	197	
	36		176	8.38	203	
	36		174	8.29	198	
	32		160	7.62	181	
	36		192	9.14	222	
	36		193	9.19	223	
	36		172	8.19	196	
	36		183	8.71	210	
	40		183	8.71	210	
	36		176	8.38	200	
			193	9.19	223	
	40		200	9.52	230	
	36		184	8.76	211	
	36		187	8.9	214	
	40		194	9.24	221	

	36		152	7.24	167	
	36		183	8.71	210	
	32		152	7.24	170	
	40		197	9.38	224	
	32		143	6.81	161	
	32		147	7	162	
	36		189	9	219	
	32		164	7.81	182	
	36		180	8.57	204	
	36		196	9.33	226	
	36		180	8.57	204	
	36		173	8.24	197	
	36		180	8.57	204	
	32		179	8.52	206	
	36		183	8.71	210	
	36		180	8.57	204	
	36		163	7.76	184	
	36		144	6.86	159	
	32		146	6.95	170	
	40		200	9.52	230	
	36		196	9.33	226	
	40		197	9.38	224	
	32		163	7.76	181	
	32		137	6.52	152	
	36		180	8.57	204	
	36		176	8.38	200	
	32		140	6.67	155	
	36		183	8.71	210	
	36		176	8.38	200	
	36		180	8.57	204	
	36		173	8.24	197	

	36		183	8.71	207	
	36		180	8.57	204	
	36		183	8.71	210	
	32		145	6.9	163	
			0	0	0	

Seat No	Name	WT	CO attainmen t	AD	CO attainmen t	DAA	CO attainmen t	C++
10037	AGARWAL AJAY YOGESH	66	VG	63	0	86	E	39
10038	CHOWDHARY BHARAT BHURARAM	74	VG	76	E	75	E	27
10039	GEETA PURUSHOTTAM AGARKAR	74	VG	57	G	88	E	40
10040	JAGTAP ASMITA SUBHASH	57	G	84	E	98	O	41
10041	KAMBLE ANKITA ADHIKRAO	55	G	57	G	80	E	28
10042	MAKRAND SUBHASH KAKADE	95	O	85	E	96	O	28
10043	RASKAR KIRAN RAJENDRA	73	VG	66	VG	63	VG	43
10044	SHINDE SUPRIYA TUKARAM	71	VG	64	VG	87	E	47
10045	SHUBHAM DNYANESHWAR BHADALE	52	G	77	E	98	O	32
10046	YELMAR VARSHA DHONDIRAM	63	VG	85	E	94	O	41
10047	YELPALE AMIT PRAKASH	54	G	81	E	97	O	28
10048	YELPALE POOJA MOHAN	96	O	65	VG	59	G	30

CO attainmen t	C++ Pr	CO attainmen t	WT Pr	CO attainmen t	HRM I	CO attainmen t	CS I	CO attainmen t	DMDW	CO attainmen t	OS	CO attainmen t
E	47	O	93	O	24	O	24	FALSE	82	E	82	E
VG	33	VG	73	VG	22	O	22	O	77	E	74	VG
E	48	O	95	O	23	O	23	O	85	E	87	E
E	39	E	75	E	23	O	23	O	84	E	80	E
VG	38	E	82	E	23	O	23	O	82	E	80	E
VG	36	E	72	VG	22	O	22	O	74	VG	77	E
O	46	O	93	O	23	O	23	O	83	E	88	E
O	48	O	95	O	23	O	24	O	81	E	83	E
VG	45	O	93	O	23	O	22	O	80	E	80	E
E	48	O	97	O	24	O	22	O	84	E	86	E
VG	43	O	85	E	23	O	24	O	80	E	82	E
FALSE	44	O	85	E	23	O	23	O	82	E	84	E

CN	CO attainmen t	JAVA	CO attainmen t	JAVA Pr	CO attainmen t	DMDW Pr	CO attainmen t	HRM II	CO attainmen t	CS II	CO attainmen t	Android
82	E	43	O	46	FALSE	90	O	24	FALSE	24	FALSE	88
77	E	40	E	44	O	89	E	24	O	24	O	77
85	E	44	O	49	O	97	O	25	O	25	O	75
84	E	44	O	47	O	93	O	25	O	24	O	95
84	E	42	O	48	O	96	O	25	O	24	O	95
79	E	40	E	46	O	92	O	23	O	24	O	94
88	E	45	O	46	O	91	O	24	O	24	O	81
83	E	42	O	46	O	92	O	23	O	24	O	60
82	E	42	O	46	O	89	E	24	O	23	O	95
86	E	44	O	49	O	97	O	25	O	25	O	87
84	E	42	O	46	O	93	O	24	O	24	O	86
86	E	43	O	46	O	93	O	24	O	24	O	83

CO attainmen t	IoT	CO attainmen t	AI	CO attainmen t	Python	CO attainmen t	Python Pr	CO attainmen t	Android Pr	CO attainmen t	CS III	CO attainmen t
E	92	O	81	E	42	TRUE	48	O	96	O	24	TRUE
E	73	VG	70	VG	31	VG	42	O	87	E	23	O
E	86	E	84	E	38	E	48	O	96	O	24	O
O	89	E	81	E	42	O	46	O	93	O	24	O
O	78	E	89	E	35	E	46	O	93	O	22	O
O	91	O	77	E	41	E	44	O	89	E	21	O
E	91	O	82	E	39	E	45	O	91	O	23	O
VG	99	O	85	E	45	O	46	O	93	O	23	O
O	94	O	95	O	49	O	47	O	91	O	23	O
E	90	O	96	O	37	E	48	O	96	O	24	O
E	97	O	90	O	45	O	45	O	94	O	24	O
E	97	O	87	E	42	O	45	O	94	O	24	O

SD-I	CO attainmen t	ITC	CO attainmen t	Industrial Project	CO attainmen t	CS-IV	CO attainmen t	SD II	CO attainmen t	GP	SGPA I	SGPA II
48	O	48	TRUE	445	O	24	O	46	O	734	8.90	9.30
46	O	46	O	450	O	23	O	47	O	710	8.20	8.80
48	O	48	O	465	O	24	O	48	O	746	8.70	9.30
48	O	48	O	455	O	23	O	47	O	752	8.80	9.30
46	O	45	O	435	O	24	O	48	O	714	8.00	9.30
46	O	45	O	435	O	23	O	49	O	728	8.90	9.10
48	O	46	O	435	O	24	O	47	O	732	8.70	9.40
46	O	46	O	448	O	23	O	48	O	754	9.00	9.30
46	O	45	O	443	O	24	O	47	O	738	8.80	9.10
48	O	48	O	465	O	23	O	48	O	764	9.30	9.30
46	O	47	O	455	O	24	O	46	O	750	8.40	9.30
46	O	48	O	455	O	23	O	46	O	746	8.50	9.30

SGPA III	SGPA IV	CGPA	GRADE
9.50	9.00	9.18	A+
8.50	10.00	8.88	A+
9.30	10.00	9.33	A+
9.50	10.00	9.4	A+
9.40	9.00	8.93	A+
9.40	9.00	9.1	A+
9.50	9.00	9.15	A+
9.40	10.00	9.43	A+
10.00	9.00	9.23	A+
9.60	10.00	9.55	O
9.80	10.00	9.38	A+
9.50	10.00	9.33	A+

E. The resources I needed in this course (textbooks, handouts, library, computers etc.) were up to date, useful and available when I needed them.

Strongly Disagree	Disagree	Neutral	Agree	Strongly Agree
		✓		

F. Adequate academic and career counseling was available throughout the Program.

Strongly Disagree	Disagree	Neutral	Agree	Strongly Agree
			✓	

G. The conduct of the Program and the things I was asked to do were consistent with the program outline.

Strongly Disagree	Disagree	Neutral	Agree	Strongly Agree
				✓

H. Grading of my tests and assignments was fair and reasonable.

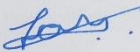
Strongly Disagree	Disagree	Neutral	Agree	Strongly Agree
			✓	

I. Student Centric Activities (Group Discussion, Use of ICT, Industrial tours, Field Trips, Projects, Workshops, Competitions etc.) were effective in developing my skills.

Strongly Disagree	Disagree	Neutral	Agree	Strongly Agree
		✓		

J. Overall, I am satisfied with the quality of my learning experiences at this institution.

Strongly Disagree	Disagree	Neutral	Agree	Strongly Agree
				✓


Student Sign:

E. The resources I needed in this course (textbooks, handouts, library, computers etc.) were up to date, useful and available when I needed them.

Strongly Disagree	Disagree	Neutral	Agree	Strongly Agree
				✓

F. Adequate academic and career counseling was available throughout the Program.

Strongly Disagree	Disagree	Neutral	Agree	Strongly Agree
			✓	

G. The conduct of the Program and the things I was asked to do were consistent with the program outline.

Strongly Disagree	Disagree	Neutral	Agree	Strongly Agree

H. Grading of my tests and assignments was fair and reasonable.

Strongly Disagree	Disagree	Neutral	Agree	Strongly Agree
		✓		

I. Student Centric Activities (Group Discussion, Use of ICT, Industrial tours, Field Trips, Projects, Workshops, Competitions etc.,) were effective in developing my skills.

Strongly Disagree	Disagree	Neutral	Agree	Strongly Agree
			✓	

J. Overall, I am satisfied with the quality of my learning experiences at this institution.

Strongly Disagree	Disagree	Neutral	Agree	Strongly Agree
				✓

Suyal Jami

Student Sign:



Bansilal Ramnath Agarwal Charitable Trust's
Vishwakarma College of Arts, Commerce and Science, Pune.
(Affiliated to Savitribai Phule Pune University)
NAAC Accredited with 'B+' Grade

INTERNAL QUALITY ASSURENCE CELL (IQAC)
QUESTIONNAIRE FOR EVALUATION OF POs, PSO's & Cos

Academic Year:

Department of:

Name of Student: Shantanu Gawade

Class: BBA(LA)

Mobile Number: 747248969127

Roll No.: 3015

Rating Scale each question in five-point scale (Strongly Disagree to Strongly Agree)

- A. Class activities, assignments, laboratories etc. were helpful for developing the knowledge and skills.

Strongly Disagree	Disagree	Neutral	Agree	Strongly Agree
				✓

- B. The Program/Course has helped me to achieve core competencies to face the global challenges successfully.

Strongly Disagree	Disagree	Neutral	Agree	Strongly Agree
			✓	

- C. The Program/Course has helped me to develop good basic skills in using technology to investigate issues and communicate results also to improve my ability to think and solve problems rather than just memorize information.

Strongly Disagree	Disagree	Neutral	Agree	Strongly Agree
				✓

- D. The Program outcomes (PO)/Program Specific Outcome (PSO)/Course Outcome (CO) Regarding the knowledge and skill were made clear to me at the start of the course.

Strongly Disagree	Disagree	Neutral	Agree	Strongly Agree
			✓	

E. The resources I needed in this course (textbooks, handouts, library, computers etc.) were up to date, useful and available when I needed them.

Strongly Disagree	Disagree	Neutral	Agree	Strongly Agree
			✓	

F. Adequate academic and career counseling was available throughout the Program.

Strongly Disagree	Disagree	Neutral	Agree	Strongly Agree
				✓

G. The conduct of the Program and the things I was asked to do were consistent with the program outline.

Strongly Disagree	Disagree	Neutral	Agree	Strongly Agree
		✓		

H. Grading of my tests and assignments was fair and reasonable.

Strongly Disagree	Disagree	Neutral	Agree	Strongly Agree
			✓	

I. Student Centric Activities (Group Discussion, Use of ICT, Industrial tours, Field Trips, Projects, Workshops, Competitions etc.,) were effective in developing my skills.

Strongly Disagree	Disagree	Neutral	Agree	Strongly Agree
				✓

J. Overall, I am satisfied with the quality of my learning experiences at this institution.

Strongly Disagree	Disagree	Neutral	Agree	Strongly Agree
				✓

Shamudhaya
Student Sign:

E. The resources I needed in this course (textbooks, handouts, library, computers etc.) were up to date, useful and available when I needed them.

Strongly Disagree	Disagree	Neutral	Agree	Strongly Agree
				✓

F. Adequate academic and career counseling was available throughout the Program.

Strongly Disagree	Disagree	Neutral	Agree	Strongly Agree
			✓	

G. The conduct of the Program and the things I was asked to do were consistent with the program outline.

Strongly Disagree	Disagree	Neutral	Agree	Strongly Agree

H. Grading of my tests and assignments was fair and reasonable.

Strongly Disagree	Disagree	Neutral	Agree	Strongly Agree
		✓		

I. Student Centric Activities (Group Discussion, Use of ICT, Industrial tours, Field Trips, Projects, Workshops, Competitions etc.,) were effective in developing my skills.

Strongly Disagree	Disagree	Neutral	Agree	Strongly Agree
			✓	

J. Overall, I am satisfied with the quality of my learning experiences at this institution.

Strongly Disagree	Disagree	Neutral	Agree	Strongly Agree
				✓

Sujatani

Student Sign:



Bansilal Ramnath Agarwal Charitable Trust's
Vishwakarma College of Arts, Commerce and Science, Pune.
(Affiliated to Savitribal Phule Pune University)
NAAC Accredited with 'B+' Grade

INTERNAL QUALITY ASSURENCE CELL (IQAC)
QUESTIONNAIRE FOR EVALUATION OF POs, PSOs & Cos

Academic Year:

Department of:

Name of Student: *Sujal. Soni*

Class: *F.Y B.com*

Mobile Number: *9610194455*

Roll No.: *1146*

Rating Scale each question in five-point scale (Strongly Disagree to Strongly Agree)

- A. Class activities, assignments, laboratories etc. were helpful for developing the knowledge and skills.

Strongly Disagree	Disagree	Neutral	Agree	Strongly Agree
			<input checked="" type="checkbox"/>	<input checked="" type="checkbox"/>

- B. The Program/Course has helped me to achieve core competencies to face the global challenges successfully.

Strongly Disagree	Disagree	Neutral	Agree	Strongly Agree
				<input checked="" type="checkbox"/>

- C. The Program/Course has helped me to develop good basic skills in using technology to investigate issues and communicate results also to improve my ability to think and solve problems rather than just memorize information.

Strongly Disagree	Disagree	Neutral	Agree	Strongly Agree
			<input checked="" type="checkbox"/>	

- D. The Program outcomes (PO)/Program Specific Outcome (PSO)/Course Outcome (CO) Regarding the knowledge and skill were made clear to me at the start of the course.

Strongly Disagree	Disagree	Neutral	Agree	Strongly Agree
				<input checked="" type="checkbox"/>

E. The resources I needed in this course (textbooks, handouts, library, computers etc.) were up to date, useful and available when I needed them.

Strongly Disagree	Disagree	Neutral	Agree	Strongly Agree
		✓		

F. Adequate academic and career counseling was available throughout the Program.

Strongly Disagree	Disagree	Neutral	Agree	Strongly Agree
			✓	

G. The conduct of the Program and the things I was asked to do were consistent with the program outline.

Strongly Disagree	Disagree	Neutral	Agree	Strongly Agree
				✓

H. Grading of my tests and assignments was fair and reasonable.

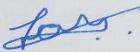
Strongly Disagree	Disagree	Neutral	Agree	Strongly Agree
			✓	

I. Student Centric Activities (Group Discussion, Use of ICT, Industrial tours, Field Trips, Projects, Workshops, Competitions etc.) were effective in developing my skills.

Strongly Disagree	Disagree	Neutral	Agree	Strongly Agree
		✓		

J. Overall, I am satisfied with the quality of my learning experiences at this institution.

Strongly Disagree	Disagree	Neutral	Agree	Strongly Agree
				✓


Student Sign:

E. The resources I needed in this course (textbooks, handouts, library, computers etc.) were up to date, useful and available when I needed them.

Strongly Disagree	Disagree	Neutral	Agree	Strongly Agree
			✓	

F. Adequate academic and career counseling was available throughout the Program.

Strongly Disagree	Disagree	Neutral	Agree	Strongly Agree
				✓

G. The conduct of the Program and the things I was asked to do were consistent with the program outline.

Strongly Disagree	Disagree	Neutral	Agree	Strongly Agree
			✓	

H. Grading of my tests and assignments was fair and reasonable.

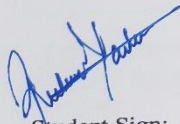
Strongly Disagree	Disagree	Neutral	Agree	Strongly Agree
			✓	

I. Student Centric Activities (Group Discussion, Use of ICT, Industrial tours, Field Trips, Projects, Workshops, Competitions etc.,) were effective in developing my skills.

Strongly Disagree	Disagree	Neutral	Agree	Strongly Agree
				✓

J. Overall, I am satisfied with the quality of my learning experiences at this institution.

Strongly Disagree	Disagree	Neutral	Agree	Strongly Agree
				✓


Student Sign:

E. The resources I needed in this course (textbooks, handouts, library, computers etc.) were up to date, useful and available when I needed them.

Strongly Disagree	Disagree	Neutral	Agree	Strongly Agree
			✓	

F. Adequate academic and career counseling was available throughout the Program.

Strongly Disagree	Disagree	Neutral	Agree	Strongly Agree
			✓	

G. The conduct of the Program and the things I was asked to do were consistent with the program outline.

Strongly Disagree	Disagree	Neutral	Agree	Strongly Agree
				✓

H. Grading of my tests and assignments was fair and reasonable.

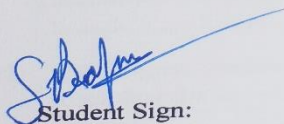
Strongly Disagree	Disagree	Neutral	Agree	Strongly Agree
				✓

I. Student Centric Activities (Group Discussion, Use of ICT, Industrial tours, Field Trips, Projects, Workshops, Competitions etc.,) were effective in developing my skills.

Strongly Disagree	Disagree	Neutral	Agree	Strongly Agree
			✓	

J. Overall, I am satisfied with the quality of my learning experiences at this institution.

Strongly Disagree	Disagree	Neutral	Agree	Strongly Agree
			✓	


Student Sign:



Bansilal Ramnath Agarwal Charitable Trust's
Vishwakarma College of Arts, Commerce and Science, Pune.
(Affiliated to Savitribai Phule Pune University)
NAAC Accredited with 'B+' Grade

INTERNAL QUALITY ASSURENCE CELL (IQAC)
QUESTIONNAIRE FOR EVALUATION OF POs, PSOs & Cos

Academic Year:

Department of:

Name of Student: *Shreya Batra.*

Class: *M.com.*

Mobile Number: *9881189279.*

Roll No.: *0200*

Rating Scale each question in five-point scale (Strongly Disagree to Strongly Agree)

- A. Class activities, assignments, laboratories etc. were helpful for developing the knowledge and skills.

Strongly Disagree	Disagree	Neutral	Agree	Strongly Agree
			<input checked="" type="checkbox"/>	

- B. The Program/Course has helped me to achieve core competencies to face the global challenges successfully.

Strongly Disagree	Disagree	Neutral	Agree	Strongly Agree
				<input checked="" type="checkbox"/>

- C. The Program/Course has helped me to develop good basic skills in using technology to investigate issues and communicate results also to improve my ability to think and solve problems rather than just memorize information.

Strongly Disagree	Disagree	Neutral	Agree	Strongly Agree
				<input checked="" type="checkbox"/>

- D. The Program outcomes (PO)/Program Specific Outcome (PSO)/Course Outcome (CO) Regarding the knowledge and skill were made clear to me at the start of the course.

Strongly Disagree	Disagree	Neutral	Agree	Strongly Agree
		<input checked="" type="checkbox"/>		



Bansilal Ramnath Agarwal Charitable Trust's
Vishwakarma College of Arts, Commerce and Science, Pune.
(Affiliated to Savitribai Phule Pune University)
NAAC Accredited with 'B+' Grade

INTERNAL QUALITY ASSURENCE CELL (IQAC)

QUESTIONNAIRE FOR EVALUATION OF POs, PSOs & Cos

Academic Year:

Department of:

Name of Student: *Rutuja Yadav*

Class: *Msc (CA) - II year.*

Mobile Number: *8788468568*

Roll No.: *0058.*

Rating Scale each question in five-point scale (Strongly Disagree to Strongly Agree)

- A. Class activities, assignments, laboratories etc. were helpful for developing the knowledge and skills.

Strongly Disagree	Disagree	Neutral	Agree	Strongly Agree
			<input checked="" type="checkbox"/>	

- B. The Program/Course has helped me to achieve core competencies to face the global challenges successfully.

Strongly Disagree	Disagree	Neutral	Agree	Strongly Agree
		<input checked="" type="checkbox"/>		

- C. The Program/Course has helped me to develop good basic skills in using technology to investigate issues and communicate results also to improve my ability to think and solve problems rather than just memorize information.

Strongly Disagree	Disagree	Neutral	Agree	Strongly Agree
			<input checked="" type="checkbox"/>	

- D. The Program outcomes (PO)/Program Specific Outcome (PSO)/Course Outcome (CO) Regarding the knowledge and skill were made clear to me at the start of the course.

Strongly Disagree	Disagree	Neutral	Agree	Strongly Agree
				<input checked="" type="checkbox"/>

E. The resources I needed in this course (textbooks, handouts, library, computers etc.) were up to date, useful and available when I needed them.

Strongly Disagree	Disagree	Neutral	Agree	Strongly Agree
			✓	

F. Adequate academic and career counseling was available throughout the Program.

Strongly Disagree	Disagree	Neutral	Agree	Strongly Agree
				✓

G. The conduct of the Program and the things I was asked to do were consistent with the program outline.

Strongly Disagree	Disagree	Neutral	Agree	Strongly Agree
			✓	

H. Grading of my tests and assignments was fair and reasonable.

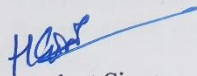
Strongly Disagree	Disagree	Neutral	Agree	Strongly Agree
			✓	

I. Student Centric Activities (Group Discussion, Use of ICT, Industrial tours, Field Trips, Projects, Workshops, Competitions etc.,) were effective in developing my skills.

Strongly Disagree	Disagree	Neutral	Agree	Strongly Agree
				✓

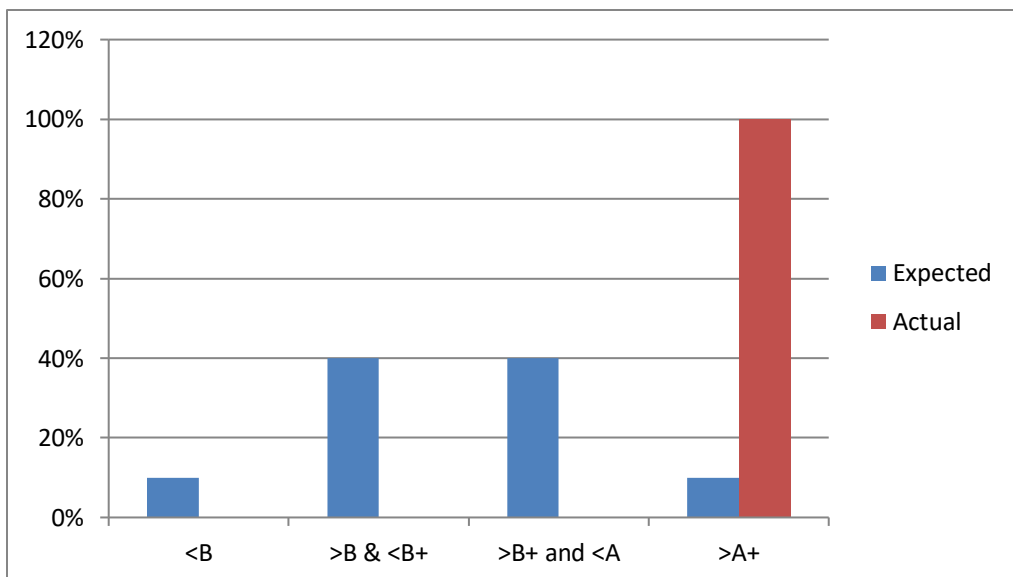
J. Overall, I am satisfied with the quality of my learning experiences at this institution.

Strongly Disagree	Disagree	Neutral	Agree	Strongly Agree
				✓


Student Sign:

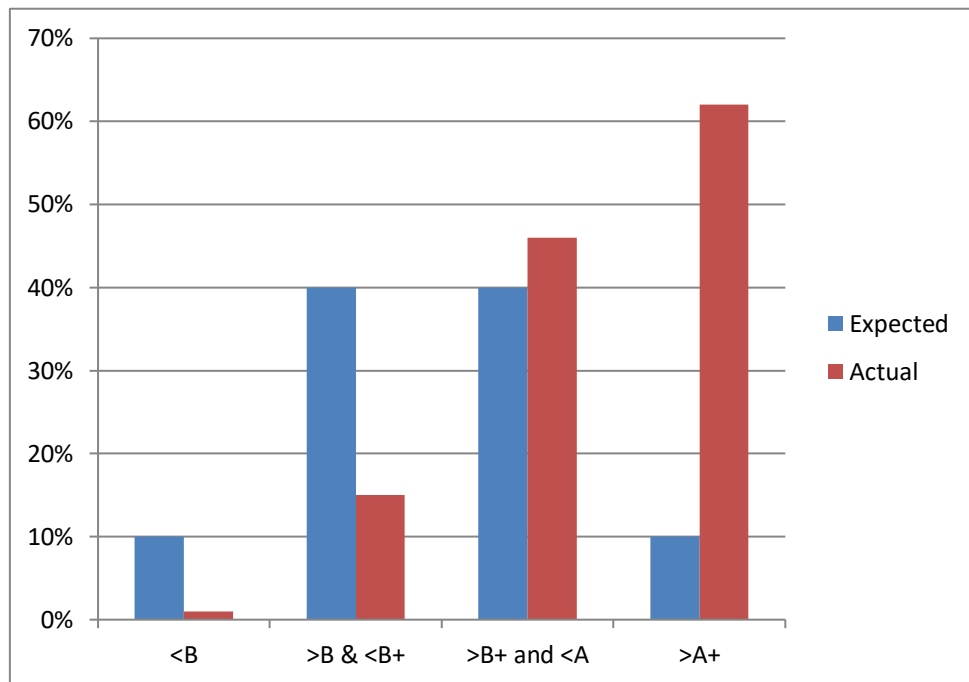
M.Sc(Computer science):

	Expected	Actual
<B	10%	0%
>B & <B+	40%	0%
>B+ and <A	40%	0%
>A+	10%	100%



TY BSc (Computer Science):

Column1	Expected	Actual
<B	10%	1%
>B & <B+	40%	15%
>B+ and <A	40%	46%
>A+	10%	62%



TY Bcom:

Column1	Expected	Actual
<B	10%	4%
>B & <B+	40%	15%
>B+ and <A	40%	46%
>A+	40%	36%

